

HERE AND NOW: CLINICAL PRACTICE

Charles J. Kahi, Section Editor

New Causes for the Old Problem of Bile Reflux Gastritis



Marshall E. McCabe IV* and Christen K. Dilly*,[‡]

*Indiana University School of Medicine, Indianapolis, Indiana; and [‡]Roudebush VA Medical Center, Indianapolis, Indiana

Bile reflux gastritis (also known as “duodenogastric reflux,” “biliary gastritis,” or “alkaline reflux gastritis”) occurs when there is retrograde movement of bile into the stomach, leading to clinical symptoms, endoscopic changes, and histologic features of a chemical (reactive) gastritis. Although William Beaumont first observed bile reflux in a patient with a gastrocutaneous fistula in 1833,¹ it was not until gastric surgery became routine in the late 1800s that the clinical importance of this problem was recognized. For nearly a century, this was thought to be a surgical disease, caused by resection or alteration of the pylorus. However, bile reflux gastritis is increasingly found in individuals without prior gastric surgery, a problem termed “primary biliary reflux.” Both surgical and pharmacologic interventions are used to treat this challenging condition.

Description of the Clinical Problem

Bile reflux gastritis can result from excess bile in the duodenum, lack of a pylorus as a barrier to retrograde flow, and/or decreased antegrade peristalsis of the stomach and duodenum (Figure 1). This can occur following gastric or biliary surgery or as primary biliary reflux. The most common predisposing surgeries are those that either remove, disrupt, or bypass the pylorus, resulting in unopposed reflux of duodenal contents.

Primary biliary reflux occurs in the absence of gastric surgery. Risk factors include gallbladder dysfunction and gastric or duodenal dysmotility.² Cholecystectomy predisposes to bile reflux because of loss of the gallbladder as a bile reservoir.³ Biliary sphincterotomy leads to increased flow of bile through the sphincter of Oddi. Phase III of gastroduodenal motility (the migratory motor complex) plays an important role, both in preventing duodenogastric reflux and in clearing the antral region of refluxed material. Individuals with bile reflux gastritis have been shown to have a decreased frequency of migratory motor complexes, suggesting that the gastritis might be related to a prolonged mucosal exposure to bile.⁴

Recurrent and excessive exposure of gastric mucosa to bile reflux can lead to endoscopic and histologic changes with or without symptoms. Evidence for this has been elegantly reviewed elsewhere.⁵ Symptoms are vague and variable, but they can include abdominal pain, dyspepsia, nausea with bilious vomiting, weight loss, or

heartburn. Although the prevalence of bile reflux gastritis is unknown, the use of opioid pain medications, prevalence of type II diabetes mellitus, and performance of intestinal transplant surgeries are increasing, and all can be associated with gastroduodenal dysmotility.

Diagnosis

The diagnosis of bile reflux gastritis is challenging, particularly in those without surgical risk factors. Endoscopic and histologic findings may be nonspecific or not well recognized by clinicians. Although there are no universally accepted criteria, it is generally believed that evidence of duodenogastric reflux in conjunction with histologic changes of gastritis is sufficient to make the diagnosis. Modalities for establishing bile reflux include visualization of duodenogastric reflux or bile pooling in the stomach on endoscopy (Figures 2 and 3), detection of bile salts in gastric fluid, measurement of bilirubin in the stomach using a fiberoptic spectrophotometer, or biliary radionuclide scanning showing radiotracer in the stomach; the latter 3 are not routinely performed in clinical practice.^{6,7} Endoscopic findings most often include erythema of the gastric mucosa and the presence of bile in the stomach (Figure 4); thickened gastric folds, erosions, and gastric atrophy can also be seen.^{3,4} Histologic examination shows features of a chemical gastritis including foveolar hyperplasia, edema, smooth muscle fibers in the lamina propria, and paucity of acute or chronic inflammatory cells.^{8,9} These features are similar to those seen in chronic nonsteroidal anti-inflammatory drug use and other chemical injuries, so it is important to exclude competing etiologies.

Management

Management of bile reflux gastritis includes medical and surgical options. Several medical therapies have been evaluated in uncontrolled or small controlled trials with variable results. Proton pump inhibitors are

Abbreviation used in this paper: UDCA, ursodeoxycholic acid.

Most current article

© 2018 by the AGA Institute
1542-3565/\$36.00

<https://doi.org/10.1016/j.cgh.2018.02.034>

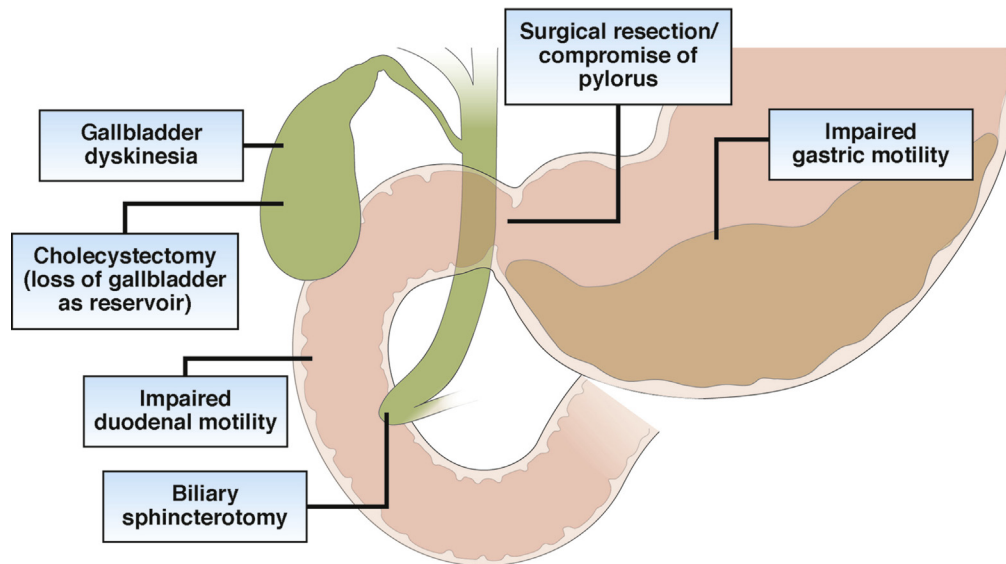


Figure 1. Factors that can contribute to bile reflux gastritis. Gallbladder dyskinesia or surgical removal of the gallbladder leads to loss of the normal reservoir for storing bile. Biliary sphincterotomy removes the barrier to bile flow into the duodenum. Surgical resection or alteration of the pylorus, such as in Billroth I or II or pyloroplasty, removes the barrier for retrograde bile flow into the stomach. Dysmotility of the stomach or duodenum can lead to retrograde movement or stasis of bile.

commonly used, although the mechanism of action is not clear. Bile acids are thought to cause damage because of their detergent properties; however, most precipitate at a low pH and cause more damage to gastric mucosa at a higher pH.⁵ A randomized trial involving 60 post-cholecystectomy patients compared sucralfate (2 g twice daily) with rabeprazole (20 mg daily) or no treatment.¹⁰ In this study, epigastric pain was reduced by 45% in patients on sucralfate, by 30% in patients on rabeprazole, and by 10% in the control group. Heartburn was reduced by 44% in the sucralfate group, 35% in the rabeprazole group, and 15% in the control group. Endoscopic scores decreased in the treatment groups, although it was not clear whether the endoscopists were

blinded. Another controlled trial for sucralfate found histologic but not symptomatic improvement. Ursodeoxycholic acid (UDCA) (1000 mg/day) was studied in a cohort of 11 patients with prior gastric surgery.¹¹ During treatment, the bile acid content in the stomach had a demonstrable change to UDCA. Five patients were treated for 4 weeks with placebo followed by 4 weeks of UDCA; these patients had no change in symptoms with placebo but did improve after 4 weeks of UDCA. An additional 7 patients were treated with UDCA followed by placebo; they had improvements on therapy but only 3 had recurrence of symptoms after the placebo period. Neither endoscopic appearance nor histology changed. Cholestyramine combined with alginates and

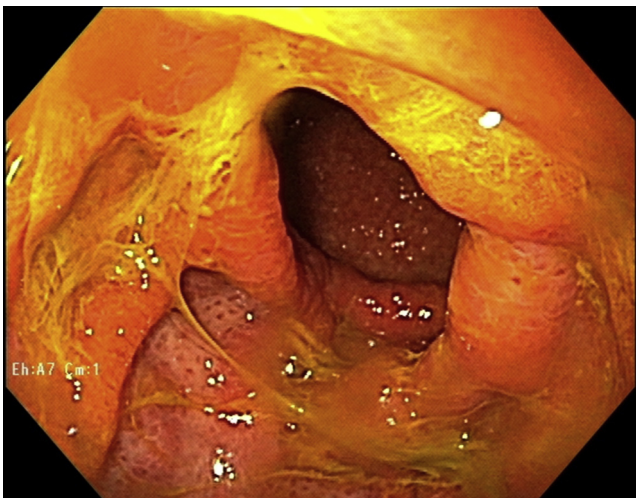


Figure 2. Bile pooling in the stomach in a patient with a Billroth 1 anastomosis.

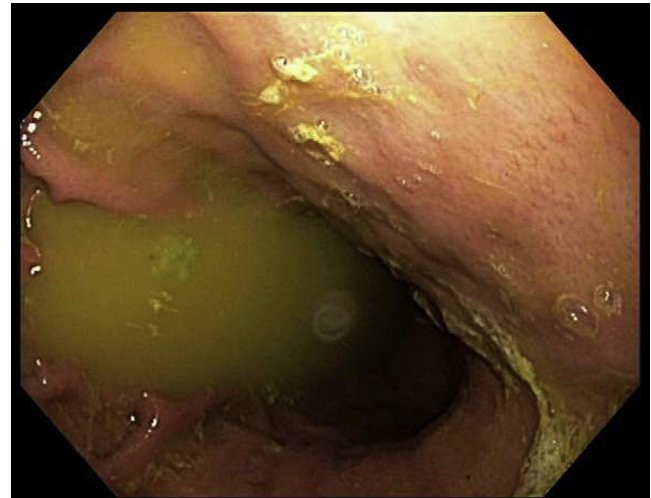


Figure 3. Bile pooling in the stomach of a patient without previous gastric surgery.

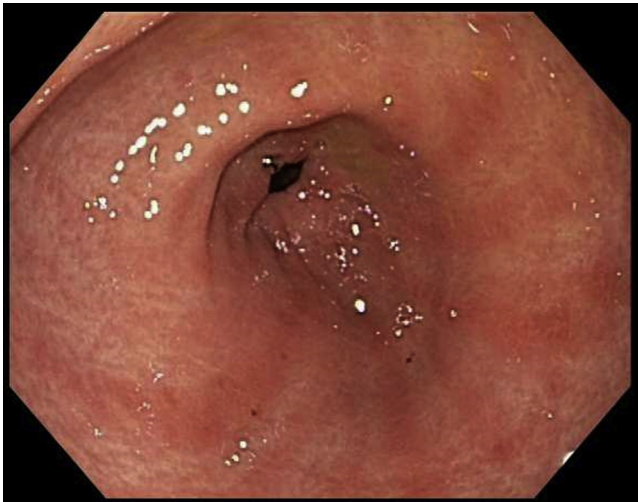


Figure 4. Striped erythema in a patient with bile reflux gastritis.

prostaglandin E₂ have also been studied in small controlled trials but were ineffective. The role of prokinetic agents in the management of bile reflux gastritis has not been well studied. The goal of treatment is to relieve symptoms; although an increased risk of gastric adenocarcinoma has been theorized and suggested by animal models, this risk has not been demonstrated in humans.

Surgical management of bile reflux aims to divert bile away from the stomach. These procedures are reserved for only severely symptomatic patients, generally where the reflux is caused by prior surgery. The most commonly used procedures include interposed isoperistaltic jejunal (Henley) loop, Braun enter-oenterostomy, and a Roux-en-Y procedure. A Roux-en-Y choledochojejunostomy can be used to divert bile directly from the biliary tree after cholecystectomy.⁶ These procedures are effective in relieving symptoms

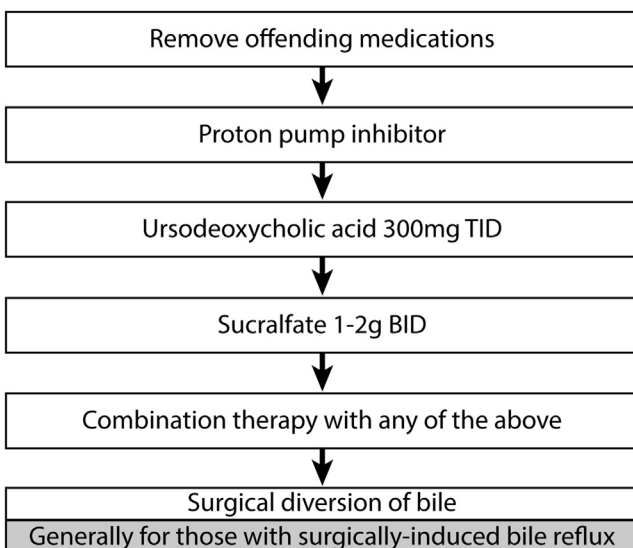


Figure 5. Proposed treatment algorithm.

but can be complicated by stomal ulcerations, Roux stasis syndrome, and bezoar formation.

As a general treatment approach, the first step may be to stop any nonessential medications that might reduce gastroduodenal motility (Figure 5). If medical therapy is necessary, given the lack of strong evidence for any particular therapy, we believe it is reasonable to start with a proton pump inhibitor. This is part of the treatment algorithm for dyspepsia, and it may treat etiologies of symptoms beyond bile reflux gastritis. If this is ineffective, UDCA, 300 mg 3 times daily, may be tried. If symptoms persist, sucralfate, 1–2 g twice daily, may be the next option. Combination therapy could be tried if individual therapies are ineffective. Finally, for severely symptomatic patients, particularly those whose reflux is caused by prior surgery, surgical diversion of bile is considered.

Take-Home Messages

- Bile reflux gastritis is a well-known complication of gastric surgery, particularly those that disrupt or bypass the pylorus.
- Primary biliary reflux is a more recently recognized problem that occurs in patients without gastric surgery and is related to excess bile in the duodenum (caused by cholecystectomy, gallbladder dysmotility, or sphincterotomy) or decreased gastric or duodenal motility.
- The diagnosis of bile reflux gastritis requires recognizing risk factors in symptomatic patients, followed by confirming the presence of bile in the stomach along with characteristic histologic findings.
- As the prevalence of conditions that alter gastrointestinal motility continues to increase, it is important that clinicians suspect and recognize this diagnosis.
- Treatment is challenging but often includes a trial of medical therapy that may include UDCA, sucralfate, or proton pump inhibitors.
- Patients with bile reflux gastritis related to prior surgery may benefit from surgical diversion of bile if medical treatments fail.

References

1. Beaumont W. Experiments and observations on the gastric juice, and the physiology of digestion. Plattsburgh: Printed by F. P. Allen, 1833.
2. Testoni PA, Fanti L, Passaretti S, et al. Interdigestive motility pattern in subjects with duodenogastric bile reflux. *Scand J Gastroenterol* 1987;22:757–762.
3. Atak I, Ozdil K, Yucel M, et al. The effect of laparoscopic cholecystectomy on the development of alkaline reflux gastritis and intestinal metaplasia. *Hepatogastroenterology* 2012; 59:59–61.
4. Vere CC, Cazacu S, Comanescu V, et al. Endoscopic and histological features in bile reflux gastritis. *Rom J Morphol Embryol* 2005;46:269–274.

5. Ritchie WP. Alkaline reflux gastritis: a critical reappraisal. *Gut* 1984;25:975–987.
 6. Madura JA. Primary bile reflux gastritis: diagnosis and surgical treatment. *Am J Surg* 2003;186:269–273.
 7. Niemela S. Duodenogastric reflux in patients with upper abdominal complaints or gastric ulcer with particular reference to reflux-associated gastritis. *Scand J Gastroenterol Suppl* 1985;115:1–56.
 8. Beaumont W, Osler W. Experiments and observations on the gastric juice and the physiology of digestion / William Beaumont. Together with a biographical essay, William Beaumont: a pioneer American physiologist / by Sir William Osler. Mineola, N.Y.: Dover, 1996.
 9. Dixon MFOCh, Axon ATR, King RFJG, et al. Reflux gastritis: distinct histopathological entity? *J Clin Pathol* 1986;39:524–530.
 10. Santarelli L, Gabrielli M, Candelli M, et al. Post-cholecystectomy alkaline reactive gastritis: a randomized trial comparing sucralfate versus rabeprazole or no treatment. *Eur J Gastroenterol Hepatol* 2003;15:975–979.
 11. Stefaniwsky AB, Tint GS, Speck J, et al. Ursodeoxycholic acid treatment of bile reflux gastritis. *Gastroenterology* 1985; 89:1000–1004.
-

Reprint requests

Address requests for reprints to: Christen K. Dilly, MD, MEHP, Indiana University School of Medicine, Division of Gastroenterology, Hepatology and Nutrition, 702 Rotary Circle, Suite 225, Indianapolis, Indiana 46202. e-mail: cklochan@iu.edu; fax: (317) 278-6870.

Acknowledgments

The authors acknowledge Tom Emmett, MD, MLS, for his contributions to the literature search.

Conflicts of interest

The authors disclose no conflicts.